



Field Correction for Access ClearVue™ Prone Breast Device Scale Replacement Instructions

Concerning Model Numbers: ***RT-4545CV-17***
 RT-4545CV-20



These instructions provide a detailed procedure to replace existing Centimeter Scales for those devices where the “0-cm” end is in the Inferior Position. This procedure applies to both sides of the Access ClearVue™ cutouts.



REFERENCE IMAGE:

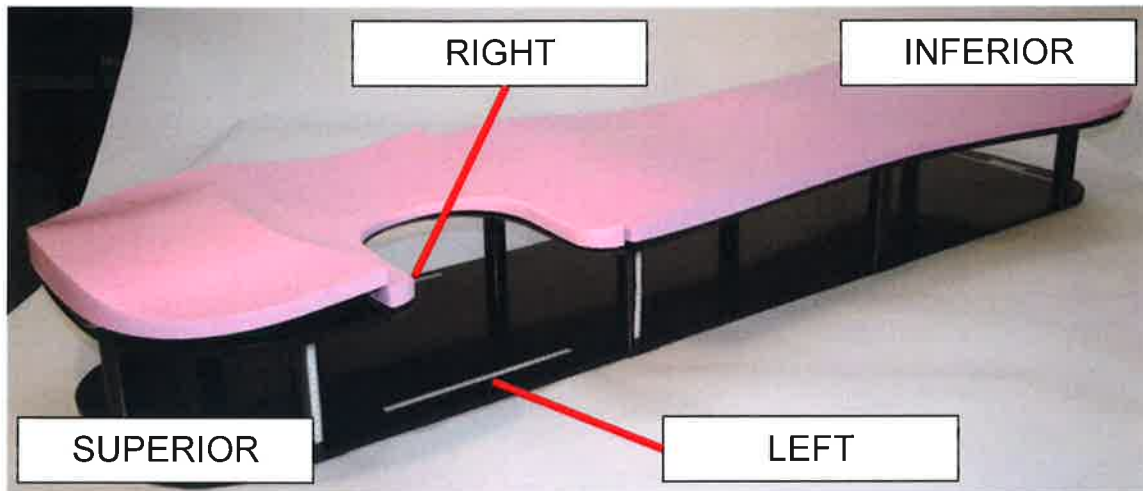


Figure 1.

The above diagram specifies the **Inferior** and **Superior** ends of the Access Clearvue™ device, as well as the **Left** and **Right** sides of the device. Figure 1 serves as a reference for other sections.

NECESSARY MATERIALS:

The following materials will be necessary to perform this correction:

- Access Clearvue™ Prone Breast Device (P/N: RT-4545CV-17 or RT-4545CV-20)
- (1) Label, 30-cm Index Left (P/N: 2004565) – *Supplied by Qfix*
- (1) Label, 30-cm Index Right (P/N: 2004567) – *Supplied by Qfix*
- Knife or Bladed Tool
- Soap and Water – Please refer to the IFU for additional solvents
- T-Square – *Supplied by Qfix*



Step 1: Remove the Scale(s) in which the “0-cm” End is in the Inferior Position

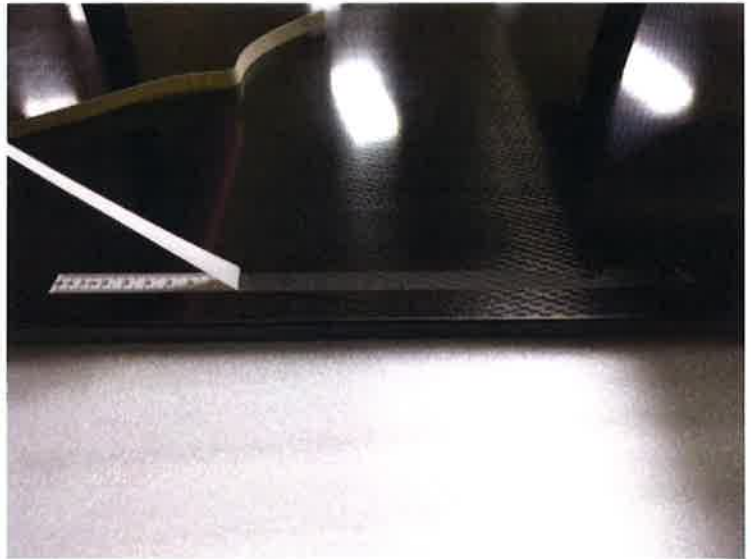


Figure 2.

Use the **Knife** or other **Blade** to peel the scale from the surface.

! Warning! Do not scratch the surface of the device.



Figure 3.

Once the scale is removed, use **Soap and Water** to remove any adhesive residue from the surface of the ClearVue™ device.



Step 2: Aligning the T-Square

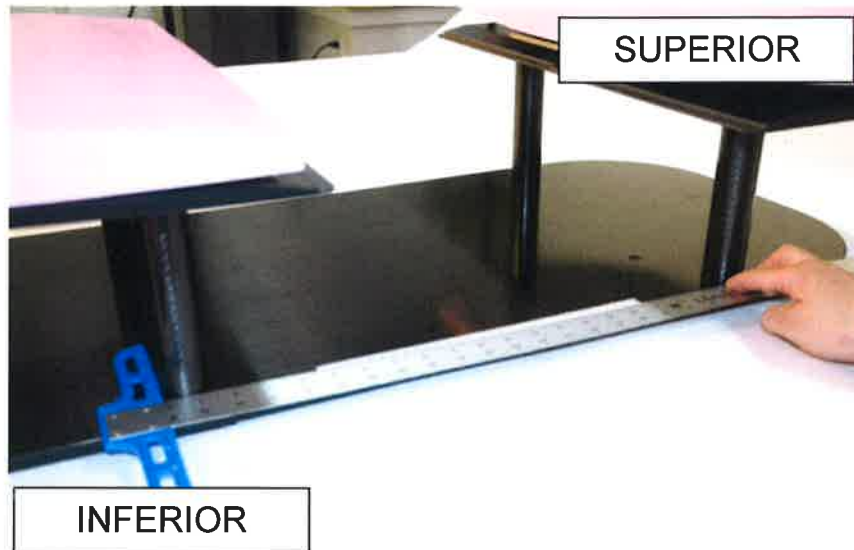


Figure 4.

Place the **T-Square** on the edge of the Access ClearVue™. Align the head of the **T-Square** with the **Inferior** post of the cutout as shown in Figure 4.

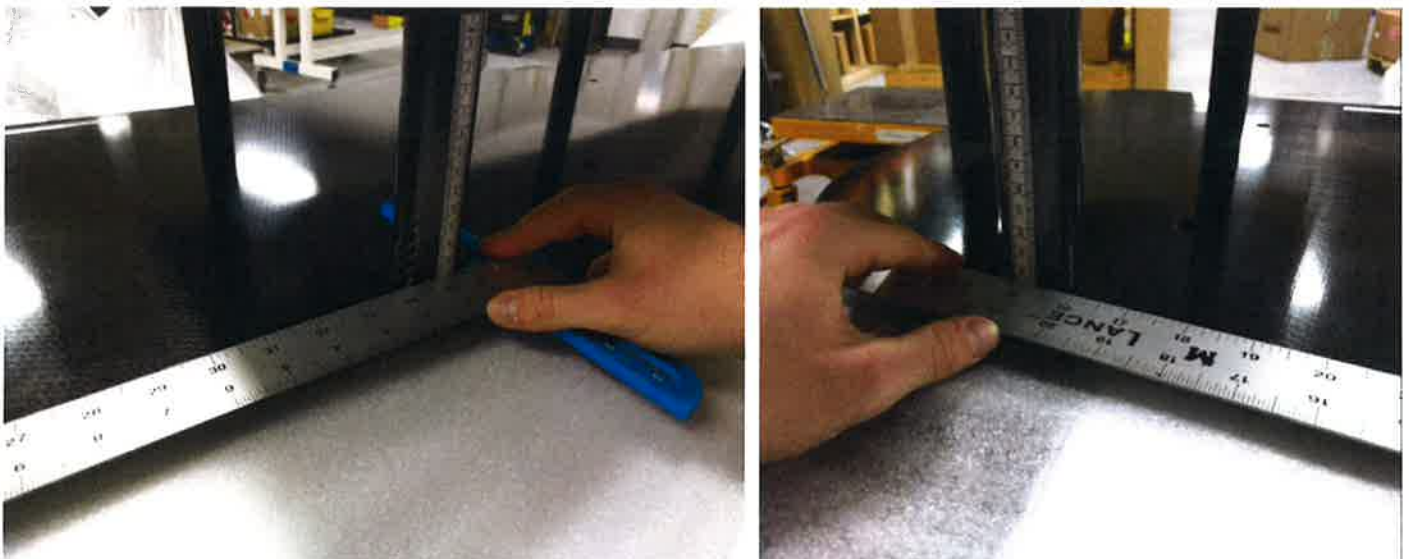


Figure 5.

Ensure the T-Square is in contact with both the **Inferior** and **Superior** posts as shown in Figure 5.



Step 3: Aligning the Scale(s)

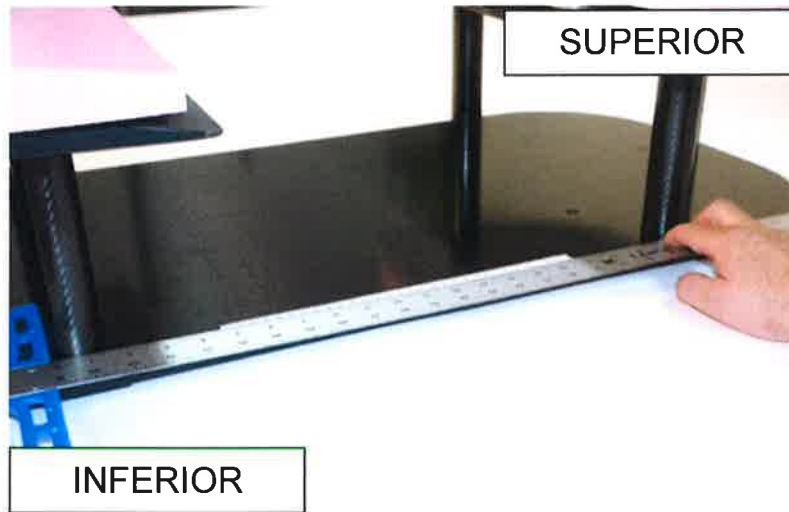


Figure 6.

Place the Scale on the inside of the T-Square. Orient the Scale such that the “0-cm” end of the Scale faces the **Superior** end of the Access ClearVue™. Ensure the Scale faces the **outer** edge of the device. *Please see Figure 1. for reference. Scale, 2004565 must be placed on the left side of the device, and Scale, 2004567 must be placed on the right.*



Figure 7.

Align the Scale along the T-Square such that the “15-cm” mark on the Scale is **11-in** from the head of the T-Square (The **Inferior** post).



Step 4: Placing the Scale(s)



Figure 8.

Once aligned, peel the backing from the Scale and place on the device. Use the T-Square edge as a guide to keep the scale aligned as it is placed. Repeat the above procedure for the Scale on the opposite side of the Access ClearVue™.

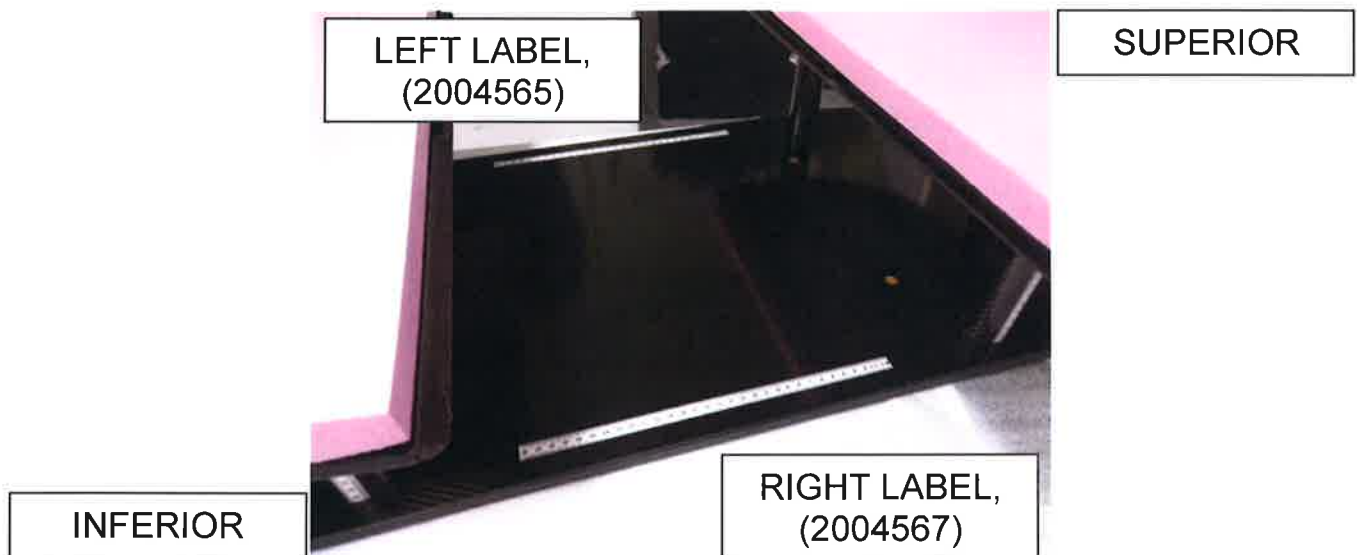


Figure 9.

Finally, ensure both scales are aligned and in the correct orientation. The "0-cm" mark must be on the **Superior** end of the device. Please refer to the Figure 9 to ensure these are correct.



Technical Support/Installation Record



Field Correction

Customer Name: <i>Tan Wan Wen</i>	Date of Original Order: <i>N/A</i>
Customer #: <i>N/A</i>	Customer PO #: <i>N/A</i>
Site/Shipping Address: <i>National Cancer Centre Singapore</i>	Qfix SO #: <i>N/A</i>
<i>11 Hospital Drive Singapore 169610</i>	Email Address: <i>frdljh@nccs.com.sg</i>
Customer Contact: <i>9115 4423</i>	Phone Number: <i>9627 2756</i>
Reason for Request/Modality: <i>Replacement of Alignment Scales</i>	

Name of individual performing correction (Technician): <i>Jane Wong & Aaron Sinn</i>	Date of Tech Support: <i>5 & 6 May 2016</i>
Technical Support Provided: <i>Alignment Scales Replaced.</i>	
Current Part Number(s) and Serial Number(s): <i>A13-00376 , A13-00377</i>	

Replacement Part Number(s)	Replacement Serial/Lot Number(s):
<i>2004565, 30-cm Index, Left</i>	<i>A13-00376 , A13-00377</i>
<i>2004567, 30-cm Index, Right</i>	<i>A13-00376 , A13-00377</i>