



# SPRAVATO® (esketamine) nasal spray: What are the risks? A guide for patients

Version 3

This document has  
been approved by  
HSA as of 09-06-2025

**Spravato**®  
(esketamine)  
nasal spray 

SPRAVATO® contains the active substance esketamine, which belongs to a group of medicines called antidepressants.

If you are being treated with SPRAVATO®, it is important that you understand the possible risks of taking this medicine. This guide will explain these risks and give you information about how you and your healthcare professional can reduce these risks.

Three risks associated with taking SPRAVATO® are: dissociation, disturbances in consciousness (sedation), and increased blood pressure. As well as these three risks, there are some other possible side effects of taking SPRAVATO®.<sup>1</sup>

**If you have any questions or concerns about the risks or side effects of taking SPRAVATO®, talk to your healthcare professional.**



## Warning

**DO NOT drive or operate machinery until the day after your SPRAVATO® treatment, following a restful sleep.**

Please plan to travel home on public transport, by taxi or arrange for someone else to drive you home after your SPRAVATO® treatment.





Avoid food for  
2 hours before your  
SPRAVATO® treatment.<sup>1</sup>



For 1 hour before your  
SPRAVATO® treatment, avoid  
using any medications that  
are sprayed into the nose.<sup>1</sup>



Avoid drinking liquids for  
30 minutes before your  
SPRAVATO® treatment.<sup>1</sup>

### One device contains 28 mg of SPRAVATO®

*Each device delivers two sprays (one spray in each nostril)*

28 mg



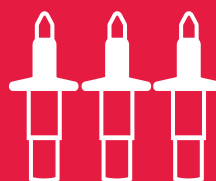
One  
device

56 mg



Two  
devices

84 mg



Three  
devices

5 mins' rest



between using  
each device

## When is SPRAVATO® prescribed?

SPRAVATO® is used in adults to reduce the symptoms of depression, such as feeling sad, anxious or worthless, sleeping difficulties, change in appetite, loss of interest in favourite activities or feeling of being slowed down. It is given, together with another antidepressant, if you have tried at least two other antidepressant medicines but they have not helped.<sup>1</sup>

SPRAVATO® is also used in adults as a short-term treatment to quickly reduce symptoms of depression in a situation requiring immediate treatment (also known as a psychiatric emergency).<sup>1</sup>

SPRAVATO® is given together with an antidepressant drug, which is taken orally (by mouth).<sup>1</sup> Your healthcare professional will talk to you about how to take the antidepressant and which days to take it on.

You will be supervised by a healthcare professional every time you take SPRAVATO®.<sup>1</sup>

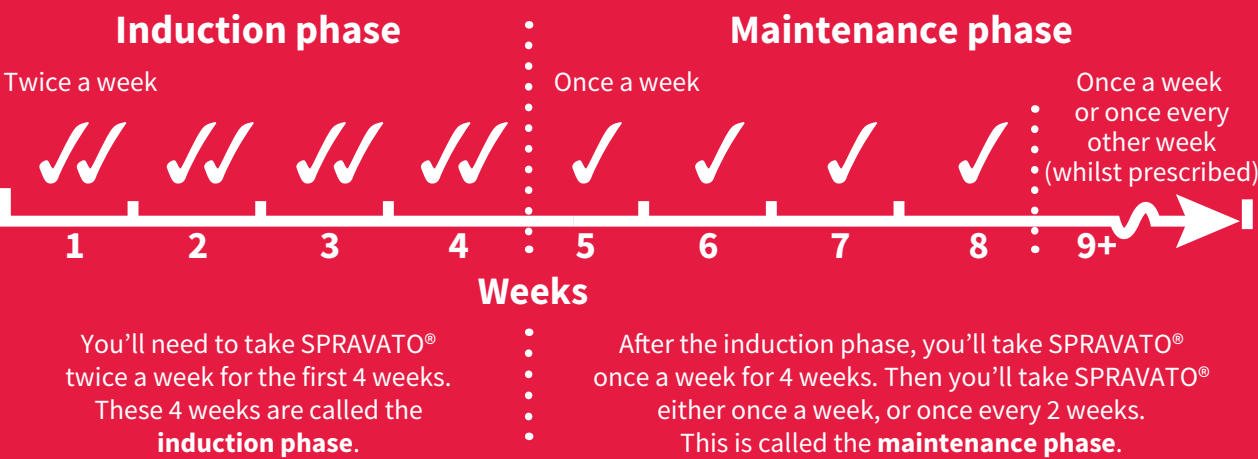
**If you have thoughts, feelings or plans of ending your own life, it's important to tell someone urgently. You might feel scared or confused by these feelings or find them overwhelming. You have options, including:**



- Tell your doctor, healthcare professional or crisis team
- Go to the nearest hospital straight away
- Talk to someone close to you (ask them if they think your depression is getting worse, or if they are worried about your behaviour)

How to take SPRAVATO®

If you are prescribed SPRAVATO® to reduce the symptoms of depression when you have previously tried at least two other antidepressant medicines, but they have not helped:



If you are prescribed SPRAVATO® as a short-term treatment to quickly reduce the symptoms of depression in a psychiatric emergency situation:



After 4 weeks of treatment with SPRAVATO®, your healthcare professional will advise you on how to continue treatment with oral antidepressant medication

How is SPRAVATO® taken?

SPRAVATO® is taken by a nasal spray device. Your healthcare professional will show you how to use the nasal spray. You will spray the medicine into your nose yourself.

Your healthcare professional will be there to support you when you are ready to use the nasal spray.

Doses for SPRAVATO® are 28 mg, 56 mg or 84 mg.<sup>1</sup> This means you may need to use more than one nasal spray device.

Your healthcare professional will advise you on how to take SPRAVATO® and what dose is right for you.

# Step-by-step guide to using your SPRAVATO® nasal spray device



## Step 1: Blow your nose once

Your healthcare professional will ask you to blow your nose once before using the first nasal spray.



## Step 2: Sit back

Your healthcare professional will get a nasal spray device ready for use and hand it to you.

Each device contains enough SPRAVATO® for two sprays, one for each nostril. Your healthcare professional will advise you to sit down and tilt your head back.



## Step 5: Device check

After using the device, hand it back to your healthcare professional. They will check that all the medicine is gone from the device.



## Step 6: Rest

Now rest for 5 minutes while leaning back slightly. Having your head tilted back will help keep the medicine in your nose. If you do feel anything dripping out of either nostril, please **do not blow your nose!** Instead, use a tissue to gently dab it.



## Step 3: First nostril

Put the tip of the device straight into your nostril. The nose rest should touch the bottom of your nose. Close the opposite nostril with your finger and breathe in while pushing up the plunger. Push the plunger all the way until it stops.

Take the device out of your nose and sniff gently to keep the medicine inside your nose.



## Step 4: Second nostril

Repeat this process in your other nostril. You might need to switch hands to make it easier.

## If you need to use more than one device

If you need to use another device, your healthcare professional will hand you another prepared device.

Use this device just like the previous one, following steps 2 to 6. **Do not blow your nose between devices.**



## Steps 2 to 6



## SPRAVATO® clinical trials

Patients with depression have taken SPRAVATO® in clinical trials.

All medicines are tested in clinical trials to make sure:

- They are effective at treating certain medical conditions
- We know about any side effects.

## Before deciding to take SPRAVATO®

Discuss the decision with your healthcare professional and raise any questions or concerns you have with them.

If you have a medical condition that affects your cardiovascular (heart and blood vessels) or respiratory (lungs and breathing) system, then you may have to be treated at a different clinic, where you can be monitored more closely. Your healthcare professional will let you know if this is the case and will explain the next steps to you.

## During and after taking SPRAVATO®

After taking SPRAVATO®, you are asked to stay at the clinic or hospital. Your healthcare professional will make sure that you're in a relaxed and calm environment. You will be able to rest in a comfortable chair or lie down.

You may experience side effects after taking SPRAVATO®; these tend to be short lasting (~90 minutes).<sup>2</sup> Everyone reacts differently to medicines and some people have fewer side effects than others. These are very common (may affect more than 1 in 10 people) side effects of using SPRAVATO®.<sup>1</sup>

However, you may not have all or any of these:

- feeling disconnected from yourself, your thoughts, feelings and things around you
- feeling dizzy
- headache
- change in sense of taste
- feeling sleepy
- decreased feeling or sensitivity, including around the mouth area
- spinning sensation ("vertigo")
- vomiting (throwing up)
- nausea (feeling sick and wanting to throw up)
- feeling anxious.

Your healthcare professional will regularly check how you're feeling and check your blood pressure.

If you are older than 65 years, you will be carefully monitored as you may be at increased risk of falling when you start moving around after treatment.

Your healthcare professional will let you know when you are ready to leave. In clinical trials, most people were ready to leave by 90 minutes after taking SPRAVATO®.<sup>2</sup>

**If you have any questions or concerns about the risks or side effects of taking SPRAVATO®, talk to your healthcare professional.**



# Dissociation: Risk

## What is dissociation?

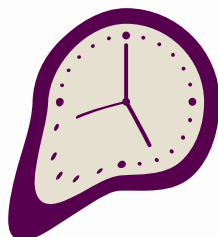
Only some people experience dissociation after taking SPRAVATO®.<sup>2,3,4</sup> It is short lasting (~90 minutes) and can happen at any visit. It tends to become less intense over time<sup>2</sup> and can be experienced in different ways.<sup>\*,1</sup>



A dreamlike state



Either a positive or negative experience



Distortion of time and space



Observing things from outside of yourself



Changes in what you see, feel and hear



Managing the risk of dissociation from SPRAVATO®

In clinical trials, people who had feelings of dissociation in the first week of starting SPRAVATO® often had them again.<sup>5</sup>

On the other hand, people who did not have feelings of dissociation in the first week often did not have them after future SPRAVATO® treatments.<sup>5</sup>

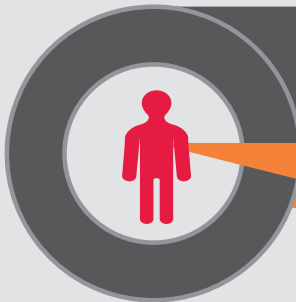
**Before taking SPRAVATO®,** your healthcare professional will make sure that you are in a calm environment.

**After taking SPRAVATO®,** your healthcare professional will check how you're feeling for signs of dissociation.

**If experiencing dissociation,** you'll be checked on until the feelings have passed and you are ready to leave.

## How common is dissociation with SPRAVATO®?

**5 in 12 people** in clinical trials told their doctor they **had feelings of dissociation.**<sup>1</sup>



**Most were mild to moderate**<sup>1</sup>

**<1 in 25 were severe**<sup>1</sup>

Symptoms tended to get better over time<sup>2</sup>

**<1 in 100 people** asked to stop taking SPRAVATO® because of their feelings of dissociation<sup>6</sup>

**Most feelings of dissociation pass within 90 minutes.**<sup>2</sup>

**Your healthcare professional will discuss your risk of dissociation with you.**



\*Dissociation and perceptual changes include transient distortions of time and space, and changes in perception of what people feel, see or hear, for example, sounds appearing louder, colours brighter or the subjective feeling of being separated from the surrounding environment or one's own body.



# Disturbances in consciousness (sedation): Risk

## What are disturbances in consciousness (sedation)?

‘Disturbances in consciousness’ is a phrase used to explain a person’s level of sedation, or sleepiness.<sup>7</sup> This ranges from feeling slightly drowsy or lethargic, to being fully unconscious (asleep and can’t be woken).<sup>8</sup>

It is unlikely that you will lose consciousness. **In clinical trials, 12 people experienced severe sedation.**<sup>9,10</sup> All the people who experienced sedation were able to breathe normally, had normal vital signs, and most recovered on the same day.<sup>1</sup>

## How common is sedation with SPRAVATO®?



In clinical trials with SPRAVATO®, 1 in 4 people were reported to experience disturbances in consciousness.<sup>\*,1</sup>

Sedation usually started around 15 minutes after taking SPRAVATO®. For most people, the level of sedation was highest 30 to 45 minutes after SPRAVATO® was taken.<sup>7</sup>

In clinical trials,<sup>†</sup> people who had feelings of sedation in the first week of starting SPRAVATO® often felt this way again in Weeks 2–4 of treatment. However, sedation can occur at any visit.<sup>5</sup>

## Range of sedation

No sedation



Slightly drowsy or lethargic



Fully unconscious



**Most people had stopped experiencing sedation by 90 minutes after SPRAVATO® was taken.<sup>1</sup>**

## Managing the risk of sedation

### Before taking SPRAVATO®,

your healthcare professional will make sure it’s OK for you to take SPRAVATO® and that you are in a safe and secure environment.

### After taking SPRAVATO®,

your healthcare professional will check for any signs of drowsiness. They do this by checking how you react to stimuli, for example saying your name, or giving you a mild shake or gentle pinch (for more severe sedation).

### If you lose consciousness,

your healthcare professional will make sure that you’re breathing normally and will check your reactions until you’re fully awake.

## Who is at risk of sedation?

Having some medical conditions, taking certain medications, or drinking alcohol may affect your risk of sedation.<sup>1</sup>

Tell your healthcare professional if you have any conditions that could affect your breathing. They will discuss the risks with you and decide whether you should take SPRAVATO®.

Tell your healthcare professional if you are taking any medications, or have had an alcoholic drink recently, so that they will know to monitor you more closely and can decide whether you should take SPRAVATO® at this time.



**Your healthcare professional will discuss your risk of sedation with you.**



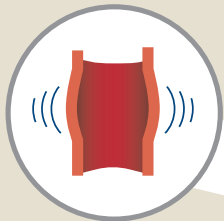
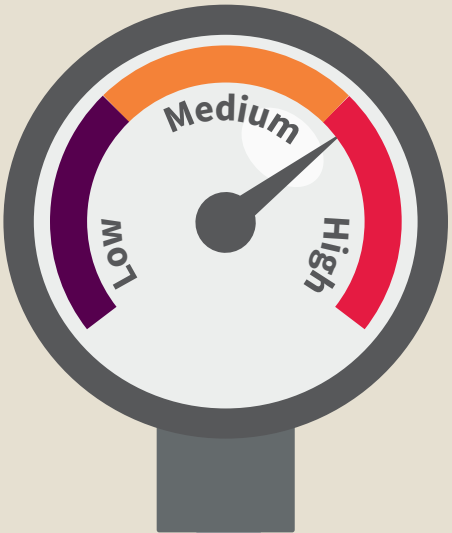
\*Including sedation; altered state of consciousness; consciousness fluctuating; depressed level of consciousness; lethargy; loss of consciousness; somnolence; sopor; stupor.  
<sup>†</sup>From the TRANSFORM-1 & -2 trials.



# Increased blood pressure: Risk

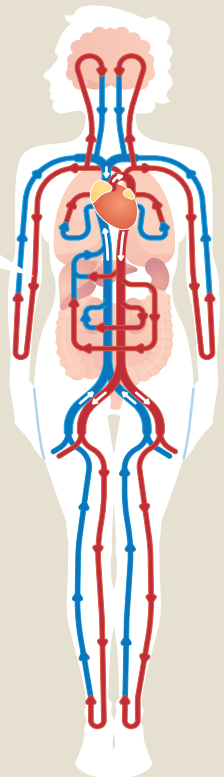
## What is increased blood pressure?

As blood moves around your body it pushes against the sides of your blood vessels, which is measured as your blood pressure.

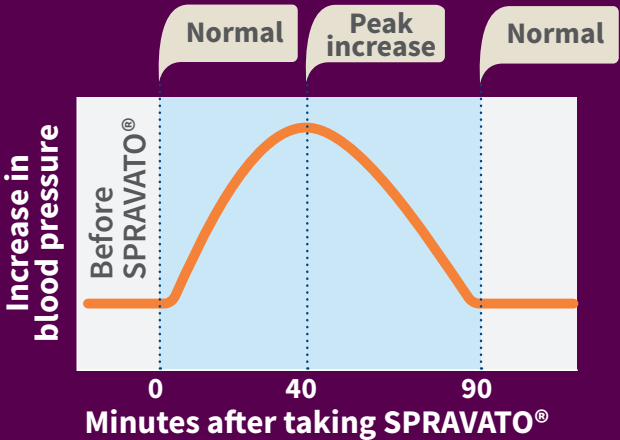


Blood pressure

An increase in blood pressure means that the force of your blood moving around your body has increased.



Blood moves around your body



The biggest increase in blood pressure was seen around 40 minutes after the dose was taken.<sup>1</sup>



For most people, blood pressure returned to normal after around 1–2 hours.<sup>1</sup>

Most people experiencing these increases were able to continue with their SPRAVATO<sup>®</sup> treatment.<sup>6</sup>

## How common is increased blood pressure with SPRAVATO<sup>®</sup>?

In clinical trials, about 2 in 15 people had a brief increase in their blood pressure after taking SPRAVATO<sup>®</sup>.<sup>1</sup> Most blood pressure increases did not last long and were not considered serious.<sup>11</sup>



It is important to talk to your healthcare professional if you have a history of certain conditions affecting your heart, brain or blood vessels, or if you have any concerns, before taking SPRAVATO<sup>®</sup>.



## Who should not take SPRAVATO<sup>®</sup>?

You cannot take SPRAVATO<sup>®</sup> if an increase in blood pressure would pose a serious risk to your health. This includes if you have ever had certain conditions such as<sup>1</sup>:



an aneurysm (a weak spot in a blood vessel wall where it widens or bulges out)



bleeding within the brain

## Managing the risk of increased blood pressure

Your healthcare professional will check your blood pressure before and after taking SPRAVATO<sup>®</sup>.

If your blood pressure is too high to start treatment with SPRAVATO<sup>®</sup>, your healthcare professional will talk to you about what you can do to lower your blood pressure. Tell your healthcare professional right away if you are feeling unwell or get chest pain, shortness of breath, sudden severe headache, change in vision, or seizures (fits) after using SPRAVATO<sup>®</sup>.

If your blood pressure increases significantly after using SPRAVATO<sup>®</sup> and remains high for more than a few hours, another doctor may evaluate you.



This is how your healthcare professional will check you for risks and support you before, during and after SPRAVATO<sup>®</sup> treatment.

## Preparation

- Your healthcare professional will discuss with you the possible risks of taking SPRAVATO<sup>®</sup> and explain how to take the medicine
- Let your healthcare professional know if you have any pre-existing medical conditions or take any medications that may affect you taking SPRAVATO<sup>®</sup>
- Do not eat for 2 hours, use a nasal spray for 1 hour, or drink for 30 minutes before you take SPRAVATO<sup>®</sup>
- As you cannot drive after your SPRAVATO<sup>®</sup> treatment, please plan to travel home on public transport, by taxi, or arrange for someone else to drive you home

## Before treatment

- Your healthcare professional will make sure you are in a calm environment
- Your blood pressure will be checked to see if it is safe for you to take SPRAVATO<sup>®</sup>
- Your healthcare professional will show you how to use the SPRAVATO<sup>®</sup> nasal spray

## During and after treatment

- You will be able to rest in a comfortable chair or lie down
- You will spray the medicine into your nose yourself
- Your healthcare professional will monitor you for signs of any side effects
- Let your healthcare professional know if you are feeling unwell
- Your blood pressure will be checked regularly

## Going home

- Your healthcare professional will check how you're feeling and agree when you are ready to leave
- Your healthcare professional may measure your blood pressure before you leave
- SPRAVATO<sup>®</sup> can make you feel sleepy or dizzy, which can temporarily affect your ability to concentrate. Therefore, do not drive or use other machines or do anything where you need to be completely alert until the next day after a restful sleep

## Adverse event reporting

Please contact your healthcare professional if you experience any side effects.

## References

1. HSA approved package insert for SPRAVATO®.
2. Popova V, et al. *Am J Psychiatry* 2019; 176:428–438.
3. Daly E, et al. Poster W68. American Society of Clinical Psychopharmacology (ASCP) 2018 Annual Meeting. Miami Beach, USA. 30 May 2018.
4. Ochs-Ross R, et al. *Am J Geriatr Psychiatry* 2019.
5. Williamson D, et al. Poster 236. *Psych Congress* 2018. Orlando, USA. 25–28 October 2018.
6. Wajs E, et al. Poster T67. American Society of Clinical Psychopharmacology (ASCP) 2018 Annual Meeting. Miami Beach, USA. 31 May 2018.
7. Janssen Cilag International NV. Data on file. RF-82799.
8. American Society of Anesthesiologists. Continuum of Depth of Sedation: Definition of General Anesthesia and Levels of Sedation/Analgesia 2014. Available from: <https://www.asahq.org/standards-and-guidelines/continuum-of-depth-of-sedation-definition-of-general-anesthesia-and-levels-of-sedationanalgesia>. Accessed October 2019.
9. Janssen. Esketamine FDA advisory committee presentation 2018.
10. Fua S, et al. Poster presented at the American Psychiatric Nurses Association (APNA) 34th Annual Conference, Virtual Meeting; September 30–October 04, 2020.
11. Doherty T, et al. *CNS Drugs* 2020; 34:229–310.

## Notes

You can use these pages to write down any questions you have about SPRAVATO®, and any advice your healthcare professional gives you.

## Notes

You can use these pages to write down any questions you have about SPRAVATO®, and any advice your healthcare professional gives you.

[illegible]

## Notes

You can use these pages to write down any questions you have about SPRAVATO®, and any advice your healthcare professional gives you.

[illegible]



**Johnson & Johnson International (Singapore) Pte Ltd**

2 Science Park Drive, #07-13, Ascent,  
Singapore Science Park 1,  
Singapore 118222.

**Johnson & Johnson**

**Spravato<sup>®</sup>**  
(esketamine)  
nasal spray 